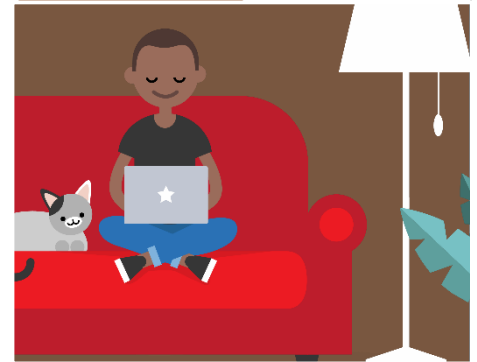


SCHOOL CLOSURE STUDENT CHECKLIST – ELEMENTARY

If your school closes, it is important that you are prepared to continue your studies at home. Review the checklist below so you know what to do before your school closes, while it is closed, and after it reopens. If you will be receiving a mobile device, you must log in to the device with your portal username and password at school before going home. **(This must happen or the mobile device will not work at home.)**



What to Do Before Your School Closes

- Let your teacher know if you need a computer at home to complete assignments.
- Listen carefully to any instructions from your teacher about what work you will need to do while your school is closed. **Complete the chart below.**
- Fill in the chart below so that you are prepared to continue learning during the school closures.

What to Do Once Your School Has Closed

- During the time your school is closed, you should continue learning by completing assignments and tasks, as assigned by your teacher.
- Instructional assignments should be done every day.

What to Do After Your School Reopens

- If you checked out a mobile device for use at home while your school was closed, you should return the mobile device to your school.

Complete this chart with information your teacher(s) gives you so you know what tools you will be using and how your teacher will communicate with you during the school closures. Answer each question for each teacher including special area teachers (Art, Music, Spanish, etc.) **Head Start (Toledo, Williams, Dunn, Garcia)**

	Teacher 1	Teacher 2	Special Areas
<b>1. What tool is my teacher using to communicate with me?</b> <i>(Canvas, ClassDojo, ClassFlow, Edmodo, Microsoft Teams, Remind, Schoology, etc.)</i>	<b>Teacher Email:</b> Ms. Toledo - <a href="mailto:toledol@dadeschools.net">toledol@dadeschools.net</a> Ms. Williams – <a href="mailto:168483@dadeschools.net">168483@dadeschools.net</a> Ms. Dunn – <a href="mailto:279198@dadeschools.net">279198@dadeschools.net</a> Ms. Garcia - <a href="mailto:Cristal.garcia001@dadeschools.net">Cristal.garcia001@dadeschools.net</a>		
<b>2. What digital resource will I use for my daily assignments?</b> <i>(i-Ready, Gizmos, iCivics, Reflex, myON, etc.)</i>	<b>Resources: - Waterford</b> Parents will receive a link with username and password through email provided to the teacher to access activities on Waterford. Activities will be monitored by the teacher.  <i>Students will complete a session a day.</i>		
<b>3. What hours will my teacher be available every day to help me?</b>	8:30-11:30	8:30-11:30	8:30-11:30

**For additional help parents may call 305-995-3000**